

PRODUCT CATALOG



www.texmaus.com

Texma Drilling Supply LLC
Houston, Texas
12824 1/2 Hempstead Rd Suite D
Houston, TX 77092
Tel:713.553.8978 Fax:713.228.7678
E-mail: sales@texmaus.com



INNOVATION |

“To exceed quality expectation with the highest integrity, strive to provide excellent customer service and continue to excel within the industry.”

O U R M I S S I O N

INNOVATION



Quality Policy

Texma Drilling Supply LLC supports our customer's success by consistently delivering products that meet or exceed their expectations and requirements. We are committed to continuous improvement in seeking the best ways to serve our customers.



What We Do

TEXMA DRILLING SUPPLY LLC specializes in the development and manufacturing of quality direct replacement OEM parts, mud pump fluid end parts and expendables for customers worldwide. Our corporate headquarters and major inventory are located in Houston, Texas. For decades TEXMA's products have passed rigorous tests of demanding oilfield operations, withstanding extreme pressures, high temperatures and corrosive environments forever present in this unpredictable industry.

Research & Development

TEXMA's research & development professionals continually monitor product performance and design, using advanced technology to improve and upgrade replacement of OEM parts. This is proven by our specialized steel liners which generate up to 1,000 hours of unyielding operations for the highest quality control system procedures and standards.

Product Warranty

TEXMA DRILLING SUPPLY LLC warrants its products to be free from material and/or workmanship defects, under normal use and service. TEXMA's fluid end module pump expendables and associated products are manufactured solely for TEXMA under API and ISO standards.



713.553.8978
www.texmaus.com



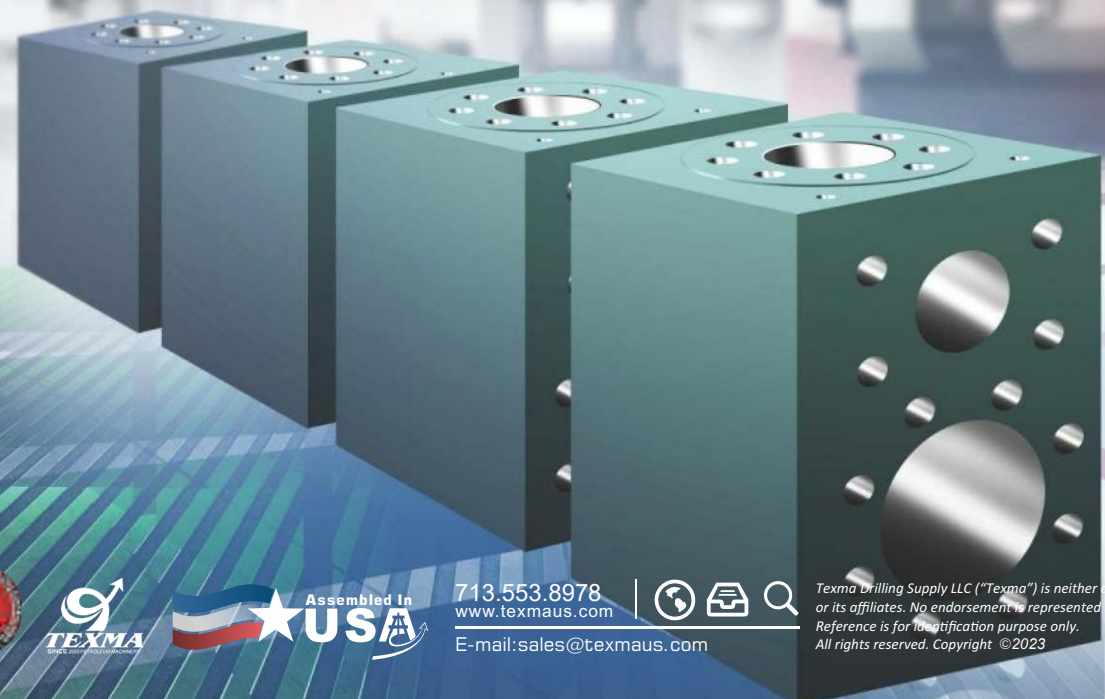
E-mail: sales@texmaus.com

Texma Drilling Supply LLC ("Texma") is neither an authorized distributor nor affiliated with any named OEMs or its affiliates. No endorsement is represented by any OEMs of any Texma products and replacement parts. Reference is for identification purpose only.
All rights reserved. Copyright © 2023

TEXMA CNC Machining Centers

State-of-the-Art Technology

Texma's CNC Machining Centers have the power of manufacturing a wide range of Mud Pump Expendables. Every product is manufactured to the exact industry standards giving our products with renowned reliability. Our rugged machining center is able to handle heavy loads at an increasing production performance with the highest quality.



- Module with Studs and Nut
- Piston Rod Clamp Types
- Extension Rod - Threaded or Clamp Type
- Threaded Ring
- Thread Ring Studs
- Liner Cage
- Cylinder Head Plug
- Cap Threaded Cylinder Head
- Valve Guide Upper
- Lock-Cover

**Contact us for products details.*



713.553.8978
www.texmaus.com



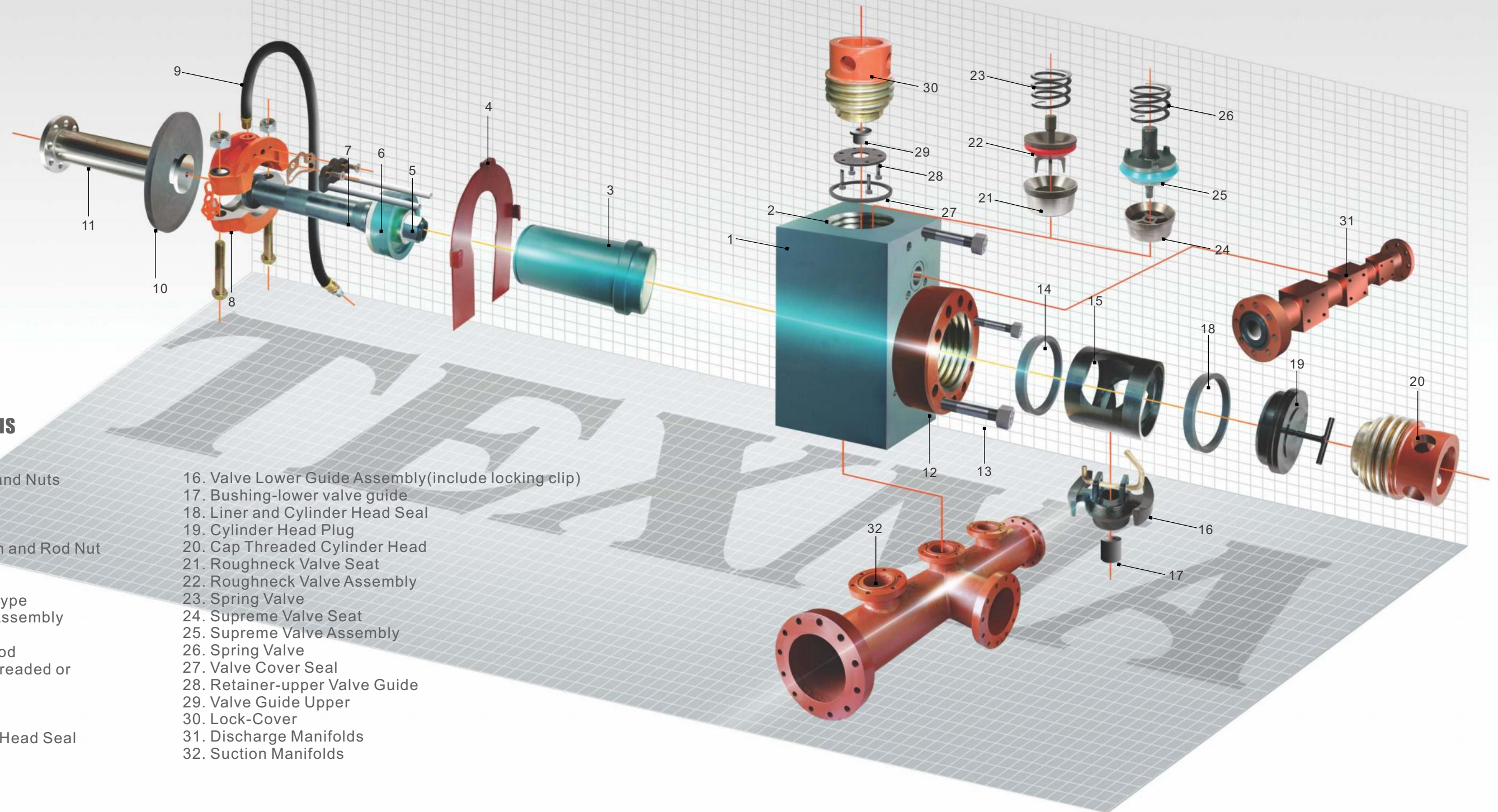
E-mail: sales@texmaus.com

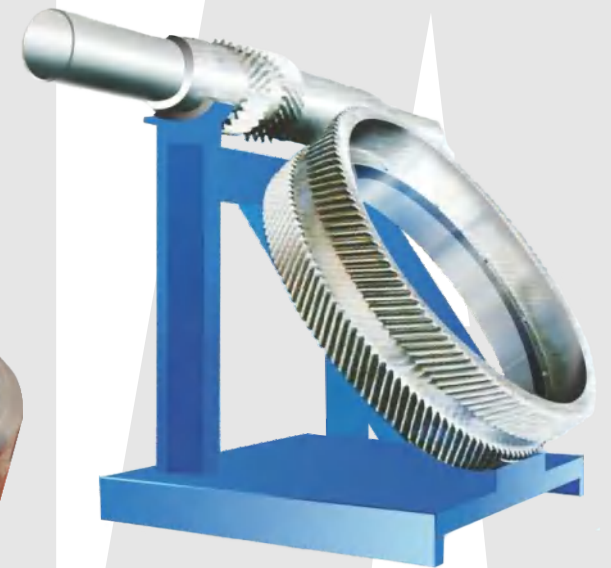
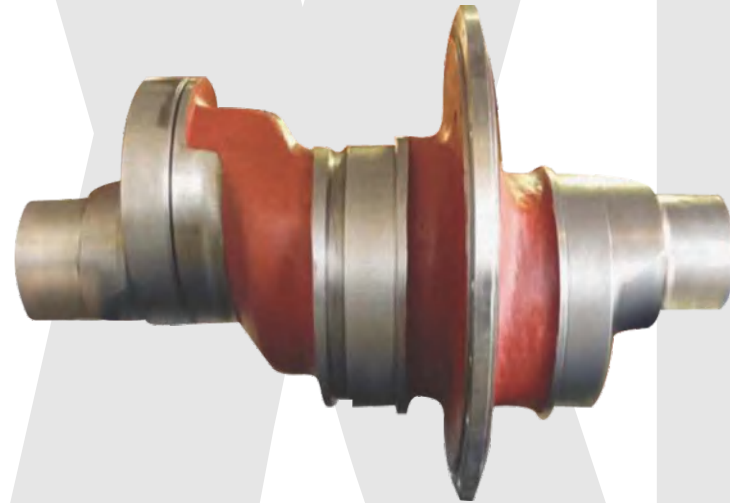
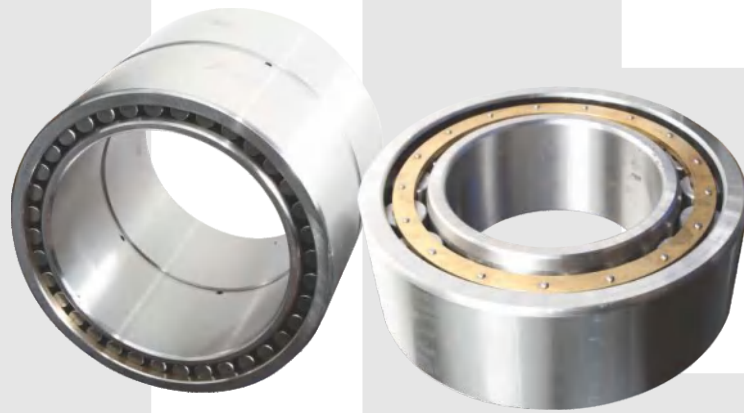
Texma Drilling Supply LLC ("Texma") is neither an authorized distributor nor affiliated with any named OEMs or its affiliates. No endorsement is represented by any OEMs of any Texma products and replacement parts. Reference is for identification purpose only. All rights reserved. Copyright © 2023

MODULE COMPONENT ANALYSIS

1. Module with Studs and Nuts
2. Module only
3. Liner 4-7 Inches
4. Liner end Cover
5. Replacement Piston and Rod Nut Elastic Stop
6. Pistons
7. Piston Rod Clamp Type
8. Piston Rod Clamp Assembly
9. Hose
10. Baffle, Extension Rod
11. Extension Rod - Threaded or Clamp Type
12. Threaded Ring
13. Thread Ring Studs
14. Liner and Cylinder Head Seal
15. Liner Cage

16. Valve Lower Guide Assembly(include locking clip)
17. Bushing-lower valve guide
18. Liner and Cylinder Head Seal
19. Cylinder Head Plug
20. Cap Threaded Cylinder Head
21. Roughneck Valve Seat
22. Roughneck Valve Assembly
23. Spring Valve
24. Supreme Valve Seat
25. Supreme Valve Assembly
26. Spring Valve
27. Valve Cover Seal
28. Retainer-upper Valve Guide
29. Valve Guide Upper
30. Lock-Cover
31. Discharge Manifolds
32. Suction Manifolds





FLUID END EXPENDABLES

- Modules: discharge & suction
- Liners
- Valves & seats
- Piston & piston rubbers
- Piston rods & extension rods
- Cylinder heads & valve covers

POWER END

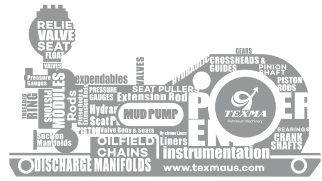
- Crankshafts
- Bearings
- Crossheads & guides
- Pinion shaft
- Gears

VALVES

- Butterfly valves
- Forged gate valves
- Float valves
- Relief valves

INSTRUMENTATION & OTHER PARTS

- Pressure gauges
- Hydraulic seat pullers
- Oilfield chains
- Gasket & baffles
- Dampeners
- Manifolds, discharge & suction
- Diaphragms & discharge crosses



2023
TEXMA

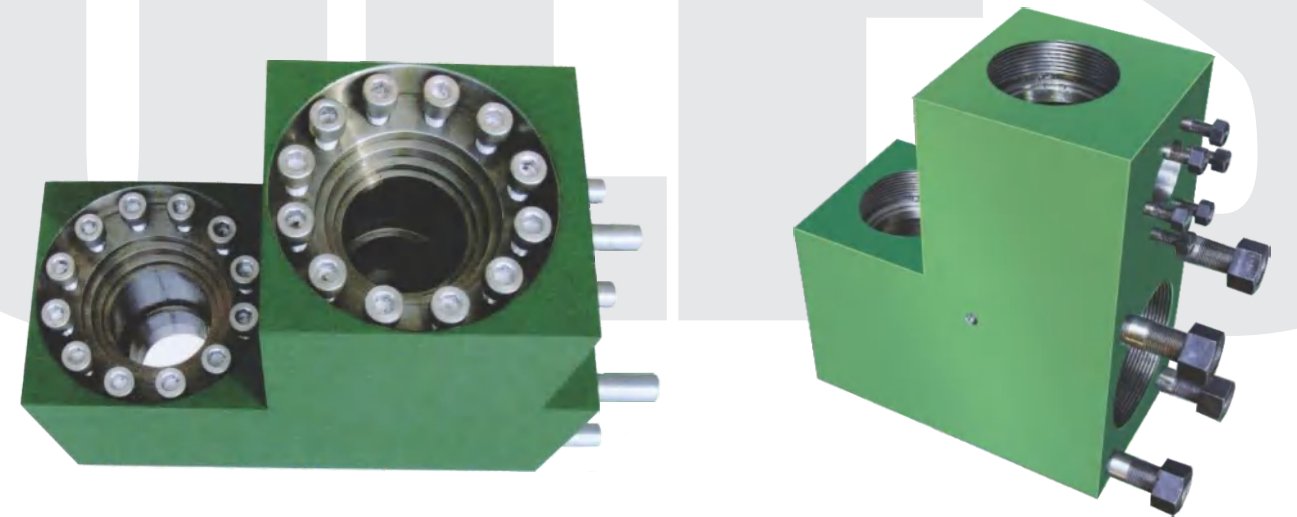
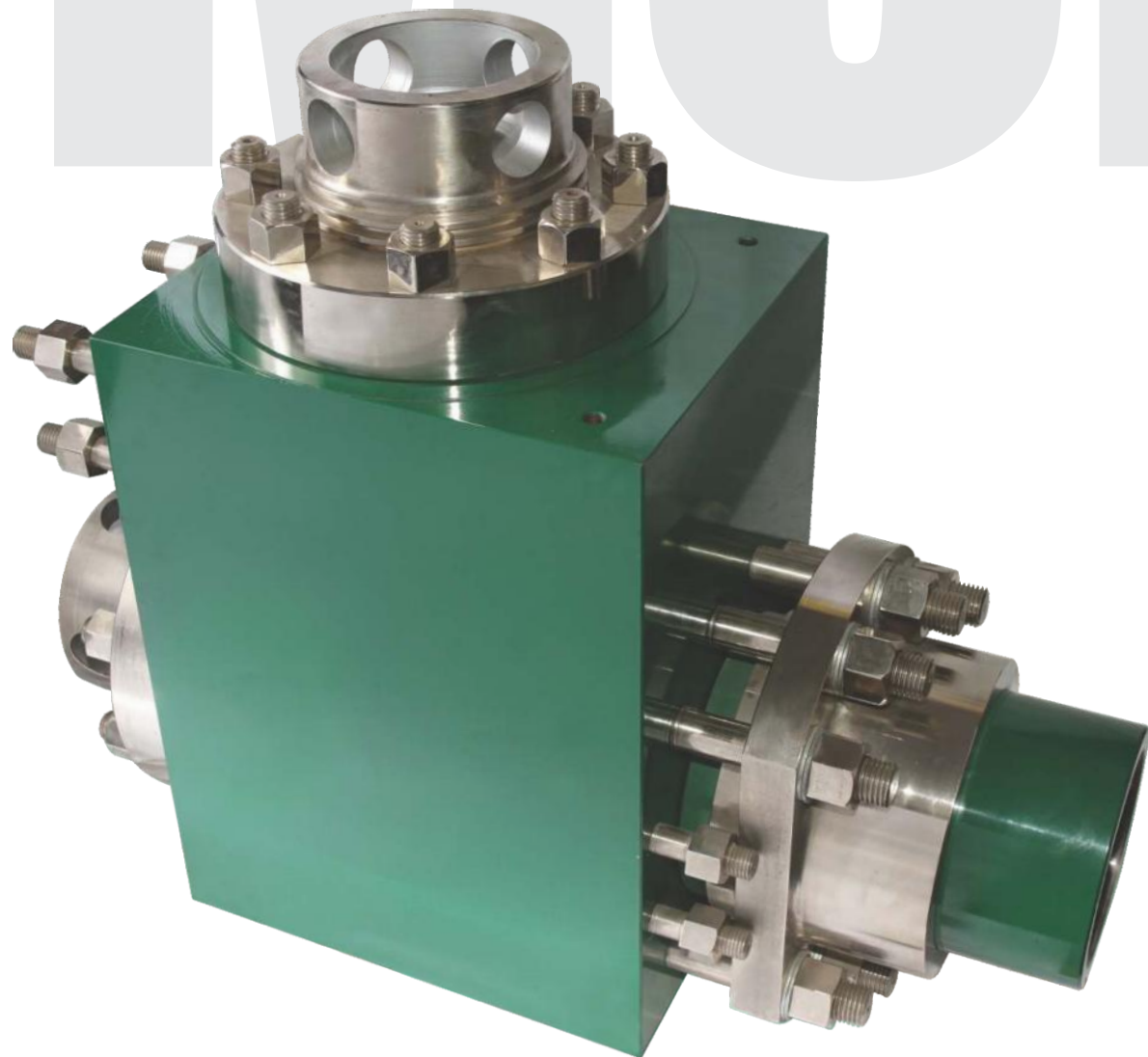
SERVICE • QUALITY • EXCELLENCE



Modules

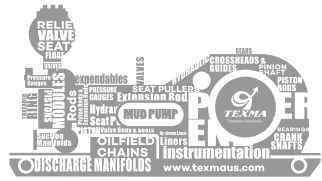
TEXMA offers premium fluid-end modules for all well-known mud pumps. All modules are made from internally hardened AISI 8620 or 4135 alloy steels with precise machining, complex heat treatment, and strict inspection in order to provide extremely durable modules for high-demand pumping requirements in current oil and gas industry.

The interchangeable suction and discharge connections enable adaptability to most OEM fluid ends, eliminating extensive spare part inventories.



Features

- Operating pressure ranges are 5,000, 7,500, and 10,000 PSI
- Valve-over-valve and L-shaped (one-bonded or two-pieces)
- Fully interchangeable with standard OEM equipment
- Incomparable manufacturing technology and quality control assure durability
- Most of TEXMA's modules are coated with our corrosion resistant material to maximize service time



2023
TEXMA

SERVICE • QUALITY • EXCELLENCE



Hy-Chrome Liner

Texma's hy-chrome liner is made with a high chrome iron sleeve in a forged steel hull. The bore hardness is 60 to 67 Rockwell C scale, while the hull has high tensile strength of more than 90,000 PSI. Combining the characteristics of chrome with state of the art manufacturing, the liner can withstand mud pressure of up to 10,000 PSI. The life of our hy-chrome liner have proven to generally reach a level of more than 800 hours of service, such performance has earned TEXMA's hy-chrome liners and outstanding reputation for extended service operations.

Ceramic Liner

Texma's ceramic liner offers longer run times and lower operating costs when compared to chrome liners. The ceramic sleeve material is manufactured from zirconia or alumina. Known for its wear resistance, it has proven run times in all type of operating conditions. The outer hull material for large bore liners is manufactured from alloy steel to increase yield strength and to aid in resistance. The ceramic liner is corrosion resistant and has a smoother surface finish for reduced friction and heat.

Hardened Steel Liner

Texma's hardened steel liner is made from premium seamless steel tube or premium forged steel, in which the bore is carbonized and quenched, creating a hardened layer of rockwell C scales harness of 58 to 62, yielding excellent wear characteristics.

Chrome Plated Liner

Texma's chrome-plated liner is made from premium forged steel with a chrome-plated bore. The chrome-plated liners has hardening characteristics of 58 to 62 Rockwell C hardness, which offers an economical yet durable alternative liner solution.



Liners:		Hy-Chrome	Ceramic	Hardened Steel	Chrome Plated
DESCRIPTION		Hy-chrome Liner	Ceramic Liner	Hardened Steel Liner	Chrome Plated Liner
Material		AISI 1045 HI CR-CF	AISI 1045 Ceramic	AISI 1045 (carburized and quenched bore)	AISI 1045 (chrome-plated bore)
Hardness:		HRC59~69	HRC84~92	HRC58~62	HRC58~62
Normal Service Life time (Hr):		800	2000~4000	800	800
Operating Condition	Operating Pressure (Max. psi)	7500	7500	7500	7500
	Temperature:	20 ~ 230 °F	20 ~ 338 °F	20 ~ 230 °F	20 ~ 230 °F
	PH. (Normal.):	7.5~10.2	10 ~ 12	7.5~10.2	7.5~10.2
	Hydrogen Sulfide (Max.) ppm	22	22	22	22
	Sand Solids (Normal):	0.21% Oil Based and Oil Emulsion	0.21% Oil Based and Oil Emulsion	0.21% Oil Based and Oil Emulsion	0.21% Oil Based and Oil Emulsion



2023
TEXMA

SERVICE • QUALITY • EXCELLENCE





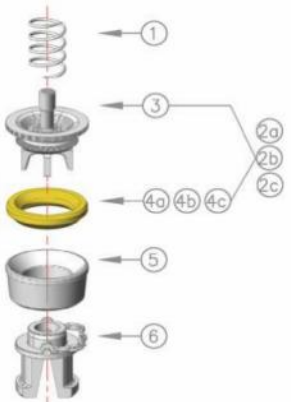
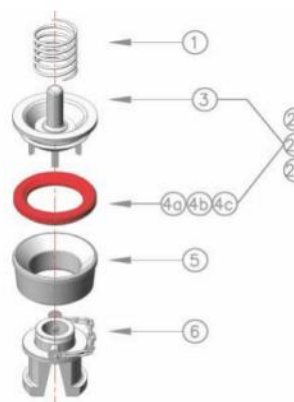
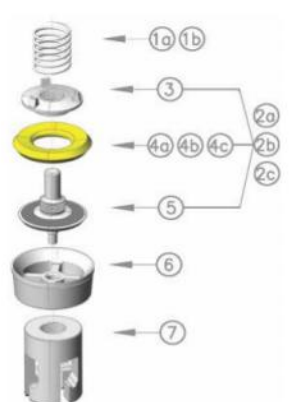
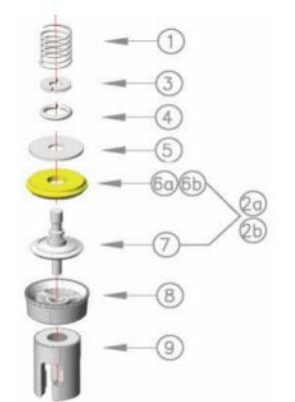
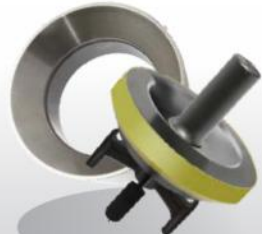

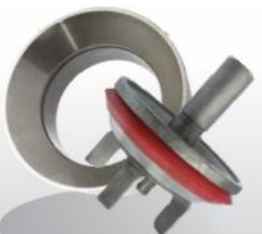

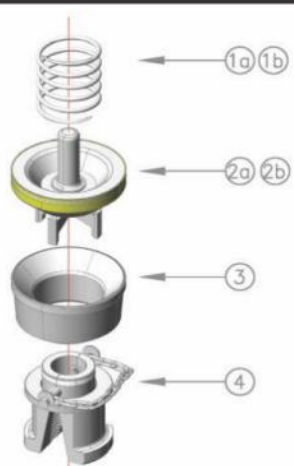
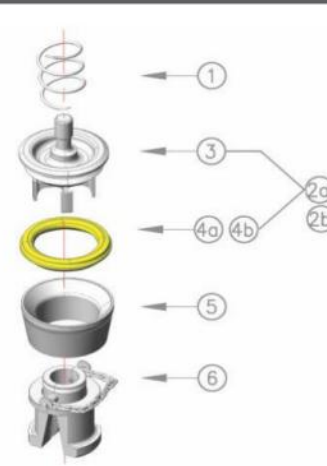
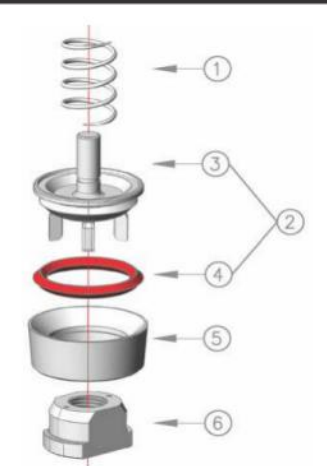
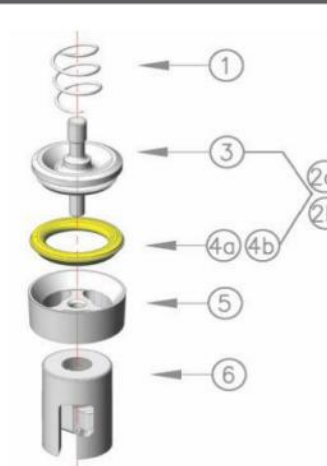


VALVE & SEATS

TEXMA's high performance valves and seats features:

- Forged alloy steel AISI 4119 construction
- Heavy-duty valve design
- Deep carburized wear surfaces
- Heavy-duty durable retainer threads
- Taper post-heat treat machined to eliminate distortion
- Precise machined to API standards
- Available in sizes to fit all major mud pumps
- Expansive range of valves and seats
- Premium Cross Arms valves and seats
- Long-life valves

We offer additional products for requirements met by hardened or stainless steel valves, including elastomer-insert valve seats.

ROUGHNECK TYPE VALVE & SEAT	ROUGHNECK HP TYPE VALVE & SEAT	SUPREME TYPE VALVE & SEAT	STANDARD PLATE TYPE VALVE & SEAT																																																																																						
																																																																																									
																																																																																									
<table><tr><td>1</td><td>Valve Spring</td></tr><tr><td>2a</td><td>Valve Assy.</td></tr><tr><td>2b</td><td>Valve Assy.</td></tr><tr><td>2c</td><td>Valve Assy.</td></tr><tr><td>3</td><td>Valve Body</td></tr><tr><td>4a</td><td>White Insert</td></tr><tr><td>4b</td><td>Urethane Insert</td></tr><tr><td>4c</td><td>Valve Insert R/N 308</td></tr><tr><td>5</td><td>Seat</td></tr><tr><td>6</td><td>Head-Valve Seat Puller</td></tr></table>	1	Valve Spring	2a	Valve Assy.	2b	Valve Assy.	2c	Valve Assy.	3	Valve Body	4a	White Insert	4b	Urethane Insert	4c	Valve Insert R/N 308	5	Seat	6	Head-Valve Seat Puller	<table><tr><td>1</td><td>Valve Spring</td></tr><tr><td>2a</td><td>Valve Assy.</td></tr><tr><td>2b</td><td>Valve W/White Insert</td></tr><tr><td>2c</td><td>Valve Assy.</td></tr><tr><td>3</td><td>Valve Body</td></tr><tr><td>4a</td><td>Insert-Urethane High Temperature</td></tr><tr><td>4b</td><td>White Insert</td></tr><tr><td>4c</td><td>Insert-Urethane</td></tr><tr><td>5</td><td>Seat</td></tr><tr><td>6</td><td>Head-Valve Seat Puller</td></tr></table>	1	Valve Spring	2a	Valve Assy.	2b	Valve W/White Insert	2c	Valve Assy.	3	Valve Body	4a	Insert-Urethane High Temperature	4b	White Insert	4c	Insert-Urethane	5	Seat	6	Head-Valve Seat Puller	<table><tr><td>1a</td><td>Valve Spring</td></tr><tr><td>1b</td><td>Spring-Stainless</td></tr><tr><td>2a</td><td>Premium Valve Assy. W/White Insert</td></tr><tr><td>2b</td><td>Premium Valve Assy. With Urethane Insert</td></tr><tr><td>2c</td><td>Premium Valve Assy. With Rubber Insert</td></tr><tr><td>3</td><td>Valve Nut</td></tr><tr><td>4a</td><td>White Insert</td></tr><tr><td>4b</td><td>Replacement Valve Urethane Insert</td></tr><tr><td>4c</td><td>Replacement Valve Buna-N Rubber Insert</td></tr><tr><td>5</td><td>Premium Valve Body</td></tr><tr><td>6</td><td>Premium Seat Cross Arms</td></tr><tr><td>7</td><td>Head-Valve Seat Puller</td></tr></table>	1a	Valve Spring	1b	Spring-Stainless	2a	Premium Valve Assy. W/White Insert	2b	Premium Valve Assy. With Urethane Insert	2c	Premium Valve Assy. With Rubber Insert	3	Valve Nut	4a	White Insert	4b	Replacement Valve Urethane Insert	4c	Replacement Valve Buna-N Rubber Insert	5	Premium Valve Body	6	Premium Seat Cross Arms	7	Head-Valve Seat Puller	<table><tr><td>1</td><td>Valve Spring</td></tr><tr><td>2a</td><td>Valve W/Polyurethane Insert</td></tr><tr><td>2b</td><td>Valve W/Rubber Insert</td></tr><tr><td>3</td><td>Clamp</td></tr><tr><td>4</td><td>Retainer Ring</td></tr><tr><td>5</td><td>Valve Nut</td></tr><tr><td>6a</td><td>Valve Insert</td></tr><tr><td>6b</td><td>Buna-N Rubber Insert</td></tr><tr><td>7</td><td>Valve Body</td></tr><tr><td>8</td><td>Valve Seat 3-Arms</td></tr><tr><td>9</td><td>Head-Valve Seat Puller-Plate Type /Double Angle</td></tr></table>	1	Valve Spring	2a	Valve W/Polyurethane Insert	2b	Valve W/Rubber Insert	3	Clamp	4	Retainer Ring	5	Valve Nut	6a	Valve Insert	6b	Buna-N Rubber Insert	7	Valve Body	8	Valve Seat 3-Arms	9	Head-Valve Seat Puller-Plate Type /Double Angle
1	Valve Spring																																																																																								
2a	Valve Assy.																																																																																								
2b	Valve Assy.																																																																																								
2c	Valve Assy.																																																																																								
3	Valve Body																																																																																								
4a	White Insert																																																																																								
4b	Urethane Insert																																																																																								
4c	Valve Insert R/N 308																																																																																								
5	Seat																																																																																								
6	Head-Valve Seat Puller																																																																																								
1	Valve Spring																																																																																								
2a	Valve Assy.																																																																																								
2b	Valve W/White Insert																																																																																								
2c	Valve Assy.																																																																																								
3	Valve Body																																																																																								
4a	Insert-Urethane High Temperature																																																																																								
4b	White Insert																																																																																								
4c	Insert-Urethane																																																																																								
5	Seat																																																																																								
6	Head-Valve Seat Puller																																																																																								
1a	Valve Spring																																																																																								
1b	Spring-Stainless																																																																																								
2a	Premium Valve Assy. W/White Insert																																																																																								
2b	Premium Valve Assy. With Urethane Insert																																																																																								
2c	Premium Valve Assy. With Rubber Insert																																																																																								
3	Valve Nut																																																																																								
4a	White Insert																																																																																								
4b	Replacement Valve Urethane Insert																																																																																								
4c	Replacement Valve Buna-N Rubber Insert																																																																																								
5	Premium Valve Body																																																																																								
6	Premium Seat Cross Arms																																																																																								
7	Head-Valve Seat Puller																																																																																								
1	Valve Spring																																																																																								
2a	Valve W/Polyurethane Insert																																																																																								
2b	Valve W/Rubber Insert																																																																																								
3	Clamp																																																																																								
4	Retainer Ring																																																																																								
5	Valve Nut																																																																																								
6a	Valve Insert																																																																																								
6b	Buna-N Rubber Insert																																																																																								
7	Valve Body																																																																																								
8	Valve Seat 3-Arms																																																																																								
9	Head-Valve Seat Puller-Plate Type /Double Angle																																																																																								
NOVATECH TYPE VALVE & SEAT	WM TYPE VALVE & SEAT	SW FULL OPEN TYPE VALVE & SEAT	DOUBLE ANGLE O-RING TYPE VALVE & SEAT																																																																																						
																																																																																									
																																																																																									
<table><tr><td>1a</td><td>Valve Spring</td></tr><tr><td>1b</td><td>Spring, Stainless Steel</td></tr><tr><td>2a</td><td>Valve W/Cast-N-Place High Temperature Insert</td></tr><tr><td>2b</td><td>Valve W/Cast-N-Place Insert</td></tr><tr><td>3</td><td>Full Open Seat</td></tr><tr><td>4</td><td>Head-Valve Seat Puller</td></tr></table>	1a	Valve Spring	1b	Spring, Stainless Steel	2a	Valve W/Cast-N-Place High Temperature Insert	2b	Valve W/Cast-N-Place Insert	3	Full Open Seat	4	Head-Valve Seat Puller	<table><tr><td>1</td><td>Valve Spring Stainless Steel</td></tr><tr><td>2a</td><td>Valve Full Open Valve Assy.</td></tr><tr><td>2b</td><td>Valve</td></tr><tr><td>3</td><td>Valve Body</td></tr><tr><td>4a</td><td>Insert Urethane</td></tr><tr><td>4b</td><td>High Temp Insert Urethane</td></tr><tr><td>5</td><td>Seat, Valve Full Open</td></tr><tr><td>6</td><td>Valve Seat Puller</td></tr></table>	1	Valve Spring Stainless Steel	2a	Valve Full Open Valve Assy.	2b	Valve	3	Valve Body	4a	Insert Urethane	4b	High Temp Insert Urethane	5	Seat, Valve Full Open	6	Valve Seat Puller	<table><tr><td>1</td><td>Valve Spring</td></tr><tr><td>2</td><td>Valve Assy. (with Urethane Insert Full Open)</td></tr><tr><td>3</td><td>Valve Body</td></tr><tr><td>4</td><td>Full Open Valve Urethane Insert</td></tr><tr><td>5</td><td>Seat Valve Full Open</td></tr><tr><td>6</td><td>Head-Valve Seat Puller</td></tr></table>	1	Valve Spring	2	Valve Assy. (with Urethane Insert Full Open)	3	Valve Body	4	Full Open Valve Urethane Insert	5	Seat Valve Full Open	6	Head-Valve Seat Puller	<table><tr><td>1</td><td>Valve Spring</td></tr><tr><td>2a</td><td>Valve Assy. With Urethane High Temp Insert</td></tr><tr><td>2b</td><td>Valve Assy. With Urethane Insert</td></tr><tr><td>3</td><td>Valve Body</td></tr><tr><td>4a</td><td>High Temperature Urethane Insert</td></tr><tr><td>4b</td><td>Urethane Insert</td></tr><tr><td>5</td><td>Seat, Three-Arms</td></tr><tr><td>6</td><td>Head, Valve Seat Puller</td></tr></table>	1	Valve Spring	2a	Valve Assy. With Urethane High Temp Insert	2b	Valve Assy. With Urethane Insert	3	Valve Body	4a	High Temperature Urethane Insert	4b	Urethane Insert	5	Seat, Three-Arms	6	Head, Valve Seat Puller																														
1a	Valve Spring																																																																																								
1b	Spring, Stainless Steel																																																																																								
2a	Valve W/Cast-N-Place High Temperature Insert																																																																																								
2b	Valve W/Cast-N-Place Insert																																																																																								
3	Full Open Seat																																																																																								
4	Head-Valve Seat Puller																																																																																								
1	Valve Spring Stainless Steel																																																																																								
2a	Valve Full Open Valve Assy.																																																																																								
2b	Valve																																																																																								
3	Valve Body																																																																																								
4a	Insert Urethane																																																																																								
4b	High Temp Insert Urethane																																																																																								
5	Seat, Valve Full Open																																																																																								
6	Valve Seat Puller																																																																																								
1	Valve Spring																																																																																								
2	Valve Assy. (with Urethane Insert Full Open)																																																																																								
3	Valve Body																																																																																								
4	Full Open Valve Urethane Insert																																																																																								
5	Seat Valve Full Open																																																																																								
6	Head-Valve Seat Puller																																																																																								
1	Valve Spring																																																																																								
2a	Valve Assy. With Urethane High Temp Insert																																																																																								
2b	Valve Assy. With Urethane Insert																																																																																								
3	Valve Body																																																																																								
4a	High Temperature Urethane Insert																																																																																								
4b	Urethane Insert																																																																																								
5	Seat, Three-Arms																																																																																								
6	Head, Valve Seat Puller																																																																																								



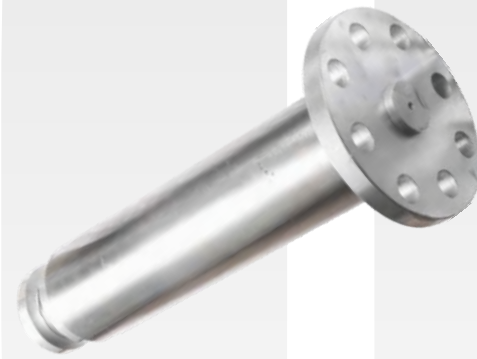
- Long-life Bonded Piston with Rubber and Fabric
- Long-life Bonded Piston with Urethane
- Long-life Bonded Piston with NBR
- Long-life Bonded Dual-Hardness
- High Pressure Pistons
- High Temperature Pistons

[illegible]



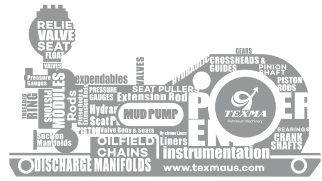
Piston Rods & Extension Rods

TEXMA's full line of piston rods and extension rods are available for various pumps. Made of forged alloy steel with thermal refining treatment, the result yields excellent mechanical characteristic. Duplex and triplex components are available.



Cylinder Heads & Valve Covers

Texma's cylinder heads and valve covers are made from forged alloy steel and designed for quick and easy access to valves and liners during maintenance operations.



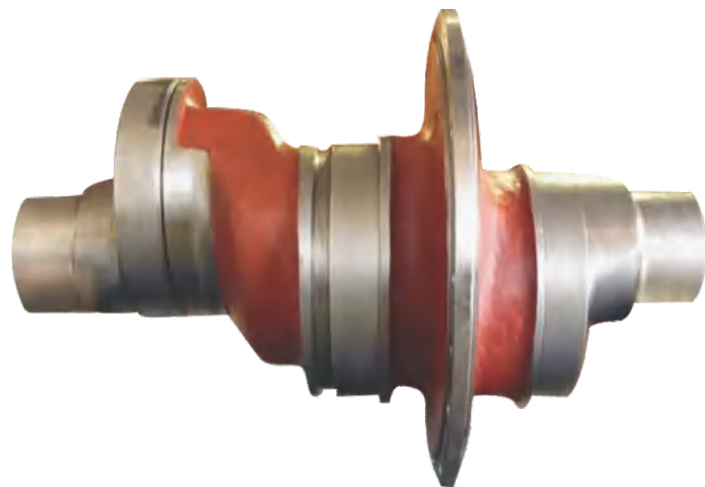
2023
TEXMA

SERVICE • QUALITY • EXCELLENCE



Crankshafts

TEXMA's crankshafts are precision machined, ground and highly polished from high tensile strength forged and cast steel blanks. Precise and accurate balancing guarantees extended run life of the rotating assembly.



Bearings

TEXMA's bearings are manufactured to precise interchangeable parts of OEM tolerances. This assures proper fit, alignment and extended service under extreme and demanding oilfield conditions.



Gears

TEXMA's gears are precision cut from casting or forgings, depending on gear applications, to OEM specifications for exact interchangeability and extended service life.





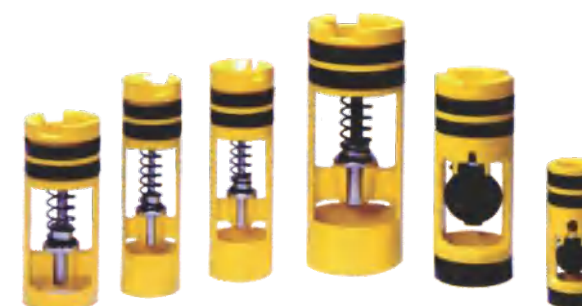
Forged Gate Valves

TEXMA's gate valves are designed to provide reliable line closures in a variety of styles and line sizes, both 3K and 5K pressures.



Butterfly Valves

TEXMA's butterfly valves include lug and wafer type from 2" to 12", in a variety of materials and elastomers. Body rating is ANSI CLASS 150 (285PSI non - shock) for ANSI 150# flange patterns.



Float Valves

Drill pipe float valves provide added blowout protection to prevent flowback when string joints are added to reduce drill pipe plugging and interchangeable with distinguished brand valves.



Relief Valves

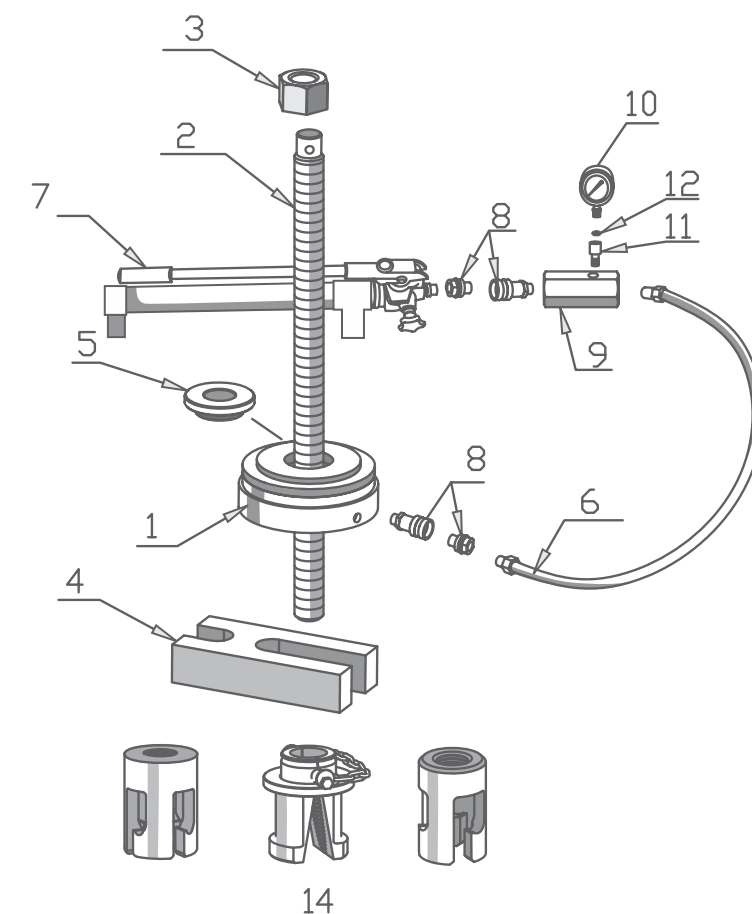
Available in several OEM configurations, sizes and pressure ratings.

TEXMA's hydraulic valve seat puller is designed to safely and efficiently remove valve seats from mud pumps. The components are made from premium forged along a throughout heat treatment for center stem and nut in order to sustain high pulling force without mechanical yielding. TEXMA also offers mechanical valve seat pullers upon request.



- TEXMA's puller can exert a force over 200,000 pounds
- Compatible to the most of styles and sizes of API 3 to API 9 valve seats (full open, 3-web, and cross-arm)
- Center stem and nut are made by high strength steel with a throughout heat treatment
- Self-sealing quick disconnect couplings are designed to fit all fluid connectors for quick installation
- Base H-bar is welded with two handles for easy handling
- Both hydraulic and mechanical puller units are available

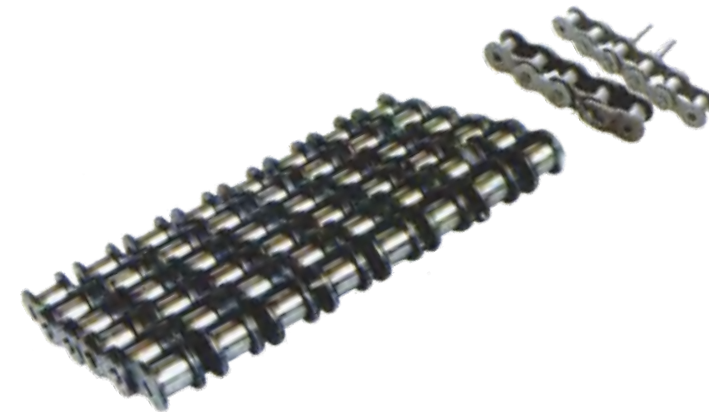
TM01016813	VALVE SEAT PULLER ASSY
1.TM01016800	HYDRAULIC JACK
2.TM01016801	Center Stem
3.TM01016803	Center Stem Nut
4.TM01016794	PULLER H-BAR
5.TM01016804	Center Bushing
6.TM01016805	HYDRAULIC HOSE, 3/8" - NPT BOTH B END X LG3000 mm
7.TM01016806	HYDRAULIC PUMP 10,000PSI, 3/8"-18 NPT-2A
8.TM01016810	3/8"NPT COUPLER
9.TM01016808	GAUGE ADAPTER
10.TM01016809	GAUGE 0~14K PSI (100 MPa)
11.TM01016811	1/4"-NPT MALE ADAPTER,M14X1.5
12.TM01016812	SEAL MAT Ø12
13.TM01016834	CARRYING CASE
14.Variable size	PULLER HEADS 3"~ 7" 60 TON (NOT INCLUDED)





Gasket & Baffles

Texma's gaskets for valve covers, cylinder heads and liner seals are made of polyurethane, rubber and or a combination of fabric and rubber resulting in a durable and flexible material unyielding to high pressures and temperature.



Oilfield Chains

Texma's roller chains are available in many styles and configurations for a variety of oilfield application providing a combination of strength and durability.



Pressure Gauges

Available in assortment of sizes, types and pressure tolerance ranges to provide quick and accurate reading in a variety of conditions. Some of which include type D, E and F in addition to other styles and configurations.



E-mail:sales@texmaus.com



Texma Drilling Supply LLC ("Texma") is neither an authorized distributor nor affiliated with any named OEMs or its affiliates. No endorsement is represented by any OEMs of any Texma products and replacement parts. Reference is for identification purpose only.

All rights reserved. Copyright © 2023